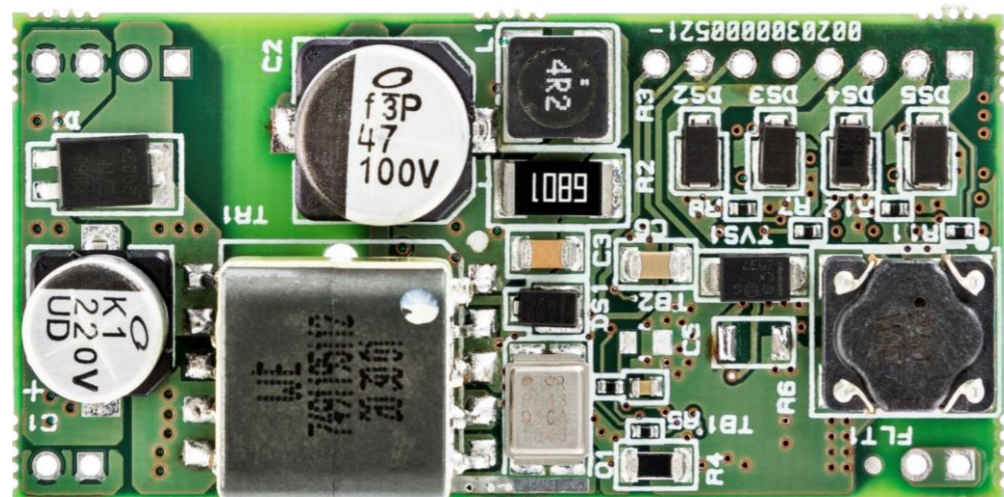


This compact PoE Module for Powered Device (PD) provides up to 36W of power in a well regulated, low noise and low ripple output with built-in rush current, overload, output short-circuit protection and thermal protection. PoE.PSU reduces installation cost and development phase.



HIGHLIGHTS

- Compact package minimum PCB footprint
- No external components required
- Cost effective
- Responsive deployment
- PoE detection and classification (Standard IEEE 802.3)

TECHNICAL SPECIFICATION

MAIN FEATURES

- Fully IEEE 802.3bt (PoE+)
- Compliant Power Sourcing Equipments (PSE)
- High efficiency (up to 90% isolated DC/DC converter)

ADDITIONAL FEATURES

- Power received on all 4 pairs – Type 4, up to Class 5
- 3 dedicated pins to indicate the PSE allocated power type
- Overload, output short-circuit and thermal protection
- EMI suppression system

OPERATING LIMITS

- +36V to +57V input voltage
- 12V@3A DC output voltage model
- 1500V DC isolation (Input to Output)
- Operating temperature: -20°C to +85°C

FORM FACTOR

- DIL – 58mm(L) x 28mm(W) x 18mm(H)
- Compact package minimum PCB footprint
- Horizontal & vertical mounting options